

# Supply Chain Management

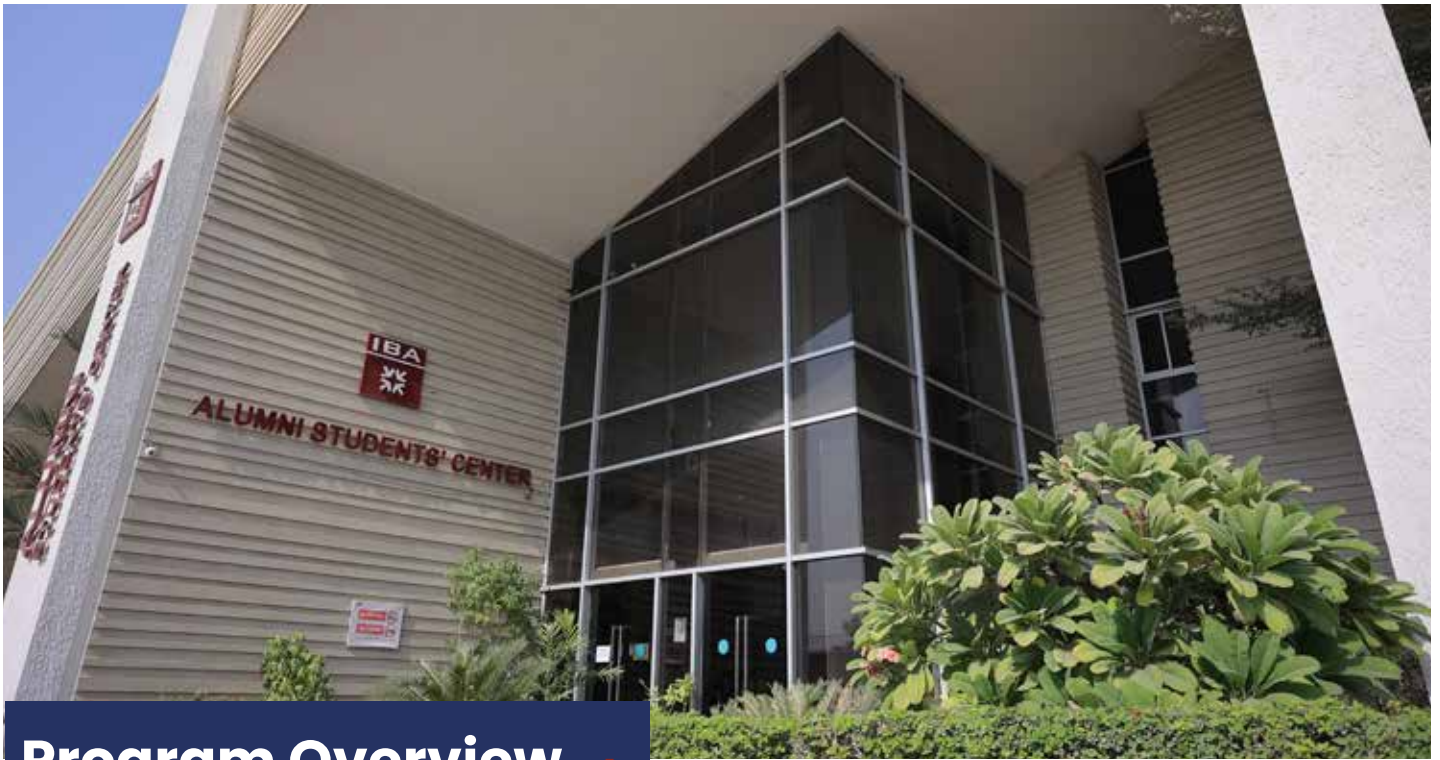
*Unleash the Power of Effective Supply Chain Decisions*



20 to 23 October, 2025



NIBAF, Islamabad



## Program Overview

**Unlock the mysteries of supply chain decision-making and learn powerful tools to influence actions and impact outcomes.**

Revolutionize your operations. In this dynamic and collaborative learning environment, you'll learn the latest tools, techniques, and models for efficient—and effective—supply chain management.

**How and why do managers make supply chain decisions?** Do they lead with their brains or guts—or a combination of the two? This course helps you make sense of it all with research-driven insights, strategic frameworks, and practical tools. Uncover the fundamental principles of supply chain decision-making drawn from supply chain drivers, operations economics, financial footprints, and consumer behavior. Then, learn how to leverage these decision-making forces to drive desired actions and achieve your business goals.

**Supply Chain Simulations and Modelling:** Taught by leading authorities on management, strategy, marketing, and decision sciences, this program offers an interdisciplinary approach to managing supply chains and leading effective operations. Faculty present state-of-the-art models and real-world local case studies on managing facilities, inventories, transportation, information, outsourcing, strategic partnering, and more. You will learn effective strategies for managing logistics and operating complex networks. You'll develop new skills for integrating your supply chain into a coordinated system and learn how to identify supply chain risks and design mitigation strategies. You'll gain practical tools for increasing service levels and reducing costs. And you'll be inspired to redesign your operations for peak performance.



# Course Outline

## Link Between Supply Chain Strategy and Structure

- Identify drivers of supply chain performance.
- Link the structure of these drivers to the success of supply chain strategy.

## Supply Chain Network Design

- Identify trade-offs in supply chain network design.
- Discuss approaches to account for uncertainty and risk when designing networks.

## Managing Risk in a Global Supply Chain

- Analyze sources of supply chain risk and explore strategies to help mitigate them.
- Incorporate reputational risk into the supply chain.

## Financial Supply Chains

- Physical and financial supply chain differences.
- Creating efficiencies in physical supply chains by focusing on financial aspects.
- Decision dashboards for major financial supply chain functions.

## Supply Chain Coordination and Integration

- Discuss causes of information distortion in the supply chain.
- Identify suitable countermeasures to coordinate the supply chain.

## Managing Inventory in a Supply Chain

- Discuss mechanisms to reduce cycle inventory without increasing cost.
- Identify approaches to reduce safety inventory without sacrificing product availability.

## Purchasing and Sourcing in a Supply Chain

- Discuss frameworks for outsourcing and extracting value from procurement.
- Analyze strategies for pricing and auctions during procurement.





## Who Should Attend?

The Supply Chain Management course is ideal for anyone who wants to understand the key drivers of supply chain decision-making and learn tools to shape activities and influence business outcomes. It's specifically designed for:

- Senior and mid-level managers and consultants responsible for domestic and international supply chain and logistics systems.
- Operations, purchasing, inventory control, and transportation managers who want to ensure high customer service levels, low system-wide costs, and smooth production with minimal inventory.
- Managers who want to gain a deeper understanding of the role supply chains play in a company's overall business strategy.
- Managers, professionals, and entrepreneurs working in supply chain, finance, procurement, operations/production, or distribution.
- Government officials responsible for procurement, finance, monitoring, and improvement.

## Trainers Profile



### **Dr. Rameez Khalid**

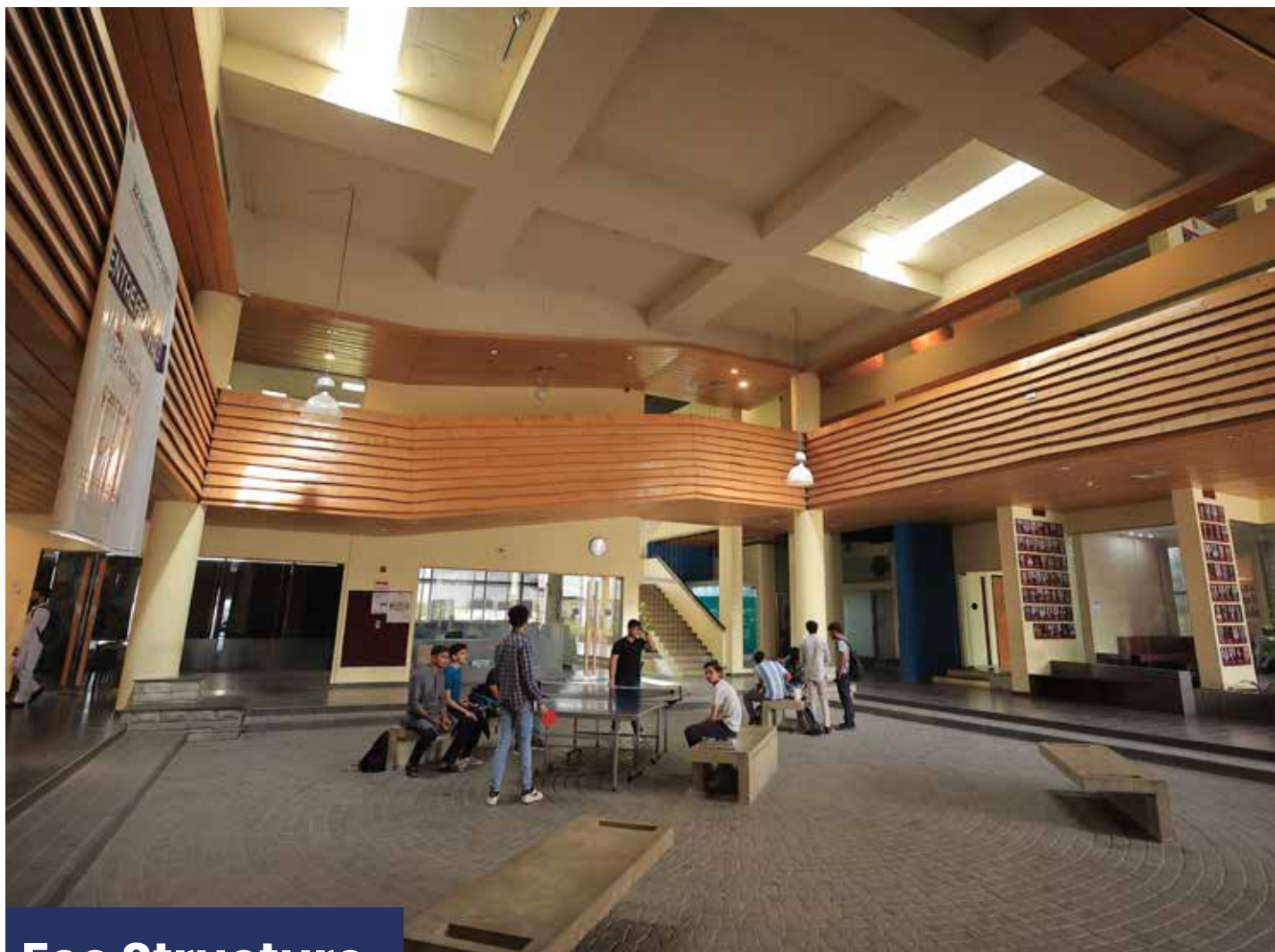
Associate Professor,  
IBA Karachi



### **Faisal Jalal**

Visiting Faculty,  
IBA, Karachi





## Fee Structure

**PKR 180,000/-**  
(plus 3% Tax)



For Registration

**SCAN  
HERE**

## Contact Us



[cee.iba.edu.pk](http://cee.iba.edu.pk)



[ceeinfo@iba.edu.pk](mailto:ceeinfo@iba.edu.pk)



021-38104701 | 1809, 1812



Plot # 68 & 88 Garden Kiyani Shaheed Road,  
Karachi, Sindh, Pakistan



**@ceeatiba**