

LEADERSHIP IN ESG & SUSTAINABLE FINANCE



April 28-30, 2026



9:00 AM - 5:00 PM



City Campus, IBA Karachi



PKR 270,000 + 3% SST



Program overview

ESG is no longer a peripheral sustainability function, it is a boardroom priority directly linked to risk, capital access, valuation, and long-term competitiveness. As investor scrutiny intensifies and regulatory expectations evolve, senior leaders must move beyond awareness toward structured oversight and capital-aligned execution.

This three-day executive program equips board members and C-suite leaders with the strategic, financial, and governance lens required to lead ESG effectively. Covering risk-based frameworks, capital allocation impact, sustainable finance instruments, disclosure standards, and board accountability, the program connects ESG leadership to measurable enterprise value.

Through executive case discussions and boardroom simulations, participants will translate ESG principles into practical decision-making and organizational transformation.

Learning Outcomes

Participants will be able to:

- Position ESG as a strategic board and executive agenda
- Assess ESG risks as drivers of credit, investment, and valuation outcomes
- Strengthen oversight across environmental, social, and governance pillars
- Align capital allocation decisions with sustainability priorities
- Understand ESG-linked finance instruments and disclosure frameworks
- Design an actionable roadmap for ESG integration and leadership execution

Who Should Attend

- Board Members and Independent Directors
- CEOs, CFOs, and Senior Executives
- Audit, Risk, and ESG Committee Members
- Senior Finance, Investment, and Strategy Leaders
- Heads of Sustainability and Corporate Governance
- Family business principals and promoters transitioning to formal governance.

Day 1

ESG Leadership & Sustainable Finance

- Evolution of ESG and Sustainable Finance globally
- ESG leadership in emerging markets
- Investor, regulator, and stakeholder expectations

ESG Strategy & Competitive Advantage

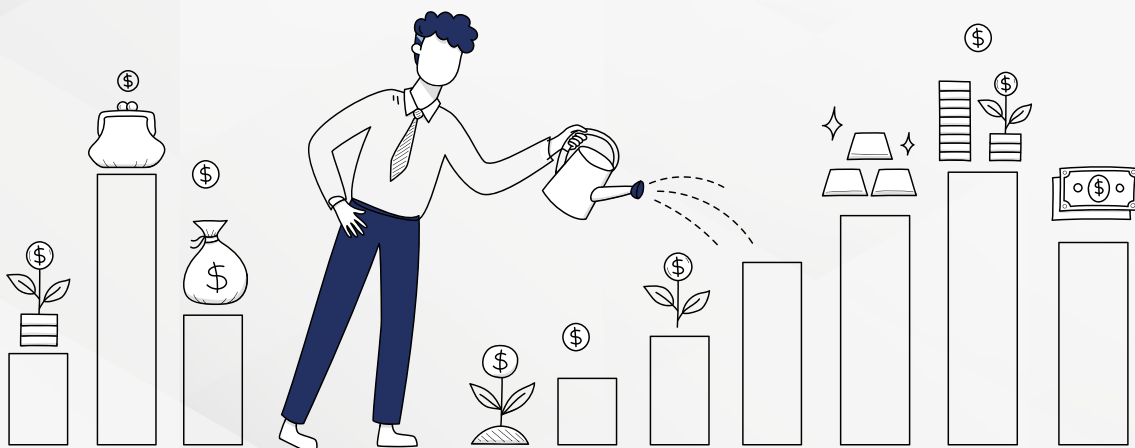
- Integrating ESG into corporate strategy and business models
- ESG as a driver of long-term value creation and resilience
- Leadership role in aligning ESG with capital allocation

IFC ESG Framework for Senior Leaders

- Overview of the IFC Sustainability Framework
- ESG risk-based approach
- Leadership accountability under IFC standards

Social Risk, Human Capital & Stakeholder Leadership

- Labor standards and workforce risk
- Community engagement and social license
- Supply chain ESG exposure



Day 2

ESG Risk, Valuation & Cost of Integrated Capital

- ESG as credit and investment risk
- Capital allocation and valuation impact
- Financing consequences of ESG decisions

Executive Case Discussion: ESG Decisions & Capital Outcomes

- Capital budgeting for ESG projects
- Leadership trade-offs
- Lessons from real cases

Environmental Leadership & Climate Risk Oversight

- Climate and transition risks
- Internalizing externalities
- Board-level environmental oversight

Boardroom Simulation: ESG Oversight & Accountability

- Executive decision-making
- Governance dilemmas
- Investor and stakeholder scrutiny



Day 3

Sustainable Finance & ESG-Linked Investments

- Spectrum of investments: from pure commercial to pure philanthropy
- Green and social bonds
- ESG integration in investment decisions

ESG Measurement, Disclosure & Leadership Accountability

- ESG KPIs and materiality
- Sustainability-related disclosure frameworks
- Non-financial metrics and rankings

Governance, Ethics & Board Accountability

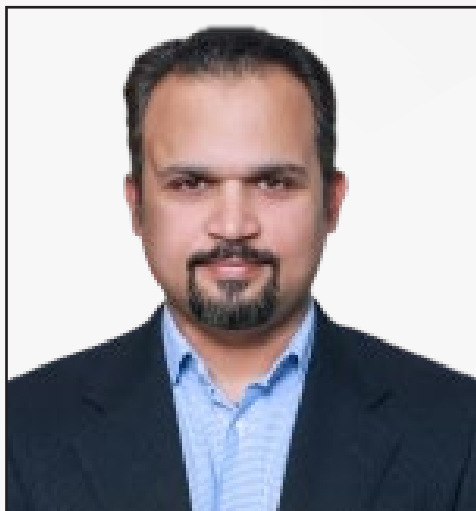
- ESG governance structures
- Ethics, transparency, and anti-corruption
- Board and committee responsibilities

Executive Roadmap for Sustainable Finance and Long-Term Value

- Board-level governance actions
- Financing and investment implications
- 90-day leadership priorities



Trainers



Dr. Usman Nazir

Assistant Professor &
Academic Head, Governance
& Leadership Programs, CEE,
IBA Karachi



Dr. Sana Tauseef

Associate Professor &
Director QEC, IBA Karachi



Dr. Ashar Saleem

Assistant Professor & Director
Graduate Programs, SBS,
IBA Karachi



Dr. Aitzaz Ahsan

Assistant Professor, SBS,
IBA Karachi



Dr. Kanza Sohail


Assistant Professor & Director
Undergraduate Program,
SBS, IBA Karachi




Mr. Fahim ul Hasan

Partner & Sustainability
Leader, A.F. Ferguson & Co.
(PwC)



 ceeinfo@iba.edu.pk

 (021) 38104701 (Ext: 1809, 1812, 1822)

 cee.iba.edu.pk


Main Campus

University Enclave, University Road,
Karachi - 75270 Pakistan
Phone : +92-(21) 3810-4700

City Campus

Plot # 68 & 88 Garden / Kiyani
Shaheed Road, Karachi - 74400 Pakistan
Phone : +92-(21) 3810-4701

 www.iba.edu.pk

 +92 21 111 422 422

      [ibakhiiofficial](#)